

## FEATURES AND BENEFITS

- window options include, open in side hung, bottom hung pivot tilt & turn and Slide & Tilt. The Casement derivative provides open out options of top hung and side hung
- single or double doorsets available in open in or out, up to 2400mm high
- safety locking
- steel look like industrial options
- large size door constructions available
- hidden sash option
- windows tested to BS7950 and doors to PAS24
- wide range of finishes and colours, Anodises, Powder coated, dual colour and new Decoral wood grain finish
- dual color options
- glazing up to 60 mm
- multi-point locking
- Eurogroove that broadens the choice of hardware available
- suites with other Aluprof's MB systems allowing total design flexibility and project solutions
- compliance with CE marking requirements

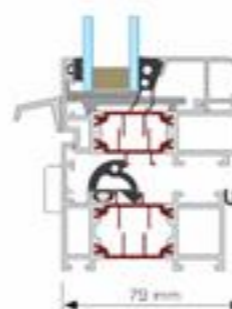
TECHNICAL SPECIFICATION	MB-70 MB-70 HI	MB-70US MB-70US HI	MB-70 Industrial MB-70 Industrial HI	MB-70SG	MB-70CW MB-70CW HI
Depth of Frame (door / window)	70 / 70			70	
Depth of Leaf (door / window)	70 / 70			70	
Glazing range mm (fixed window and door / opening window)	15 - 51 / 23 - 60	8 - 45 / 18 - 54	21-57	18 - 54	8 - 45 / 18 - 54
Min visible width T profile					
Door / window frame	51 / 47	75	47	47	78,5
Door / window leaf	72 / 32	-	32	-	34,6
Size and weight limitations					
Maximum size of window (HxW)	H 2400 mm W 1250 mm	H 1900 mm W 2400 mm	-	H 2400 mm W 2000 mm	-
Maximum size of door (HxW)	H 2400 mm W 1300 mm	-	-	-	-
Max weight of doors / windows	120 / 130 kg	130 kg	-	130 kg	-
Types of construction					
	tilt window, turn window, tilt&turn window, doors open in and open out	fixed window, tilt window, turn window, tilt&turn window	fixed window, tilt&turn window	turn window, tilt window, tilt&turn window	fixed window, tilt&turn window

PERFORMANCE	MB-70	MB-70 HI	MB-70US	MB-70US HI	MB-70 Industrial MB-70 Industrial HI	MB-70SG	MB-70CW MB-70CW HI
Air Permeability	Class 4, EN 1026:2001; EN 12207:2001						
Resistance to windload	Class C5 (2000Pa) EN 12211:2001; EN 12210:2001				Class C6 (>2000Pa) EN 12211:2001; EN 12210:2001		Class C5 (2000Pa) EN 12211:2001; EN 12210:2001
Watertightness	Class E1050 (1050Pa) EN 1027:2001; EN 12208:2001	Class E1200 (1200Pa) EN 1027:2001; EN 12208:2001	Class E1050 (1050Pa) EN 1027:2001; EN 12208:2001	Class E1050 (1050Pa) EN 1027:2001; EN 12208:2001	E750 (750Pa) EN 1027:2001; EN 12208:2001		
Thermal Insulation U <sub>f</sub> (W/m <sup>2</sup> K)	from 1,5	from 1,0	from 1,5	from 1,5	from 1,9	from 2,2	from 1,4

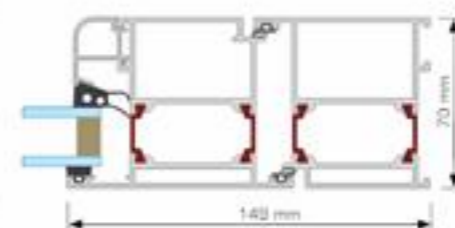


Window and door system

## MB-70



Opening window - cross-section



Door - cross-section



The Aluprof MB-70 is a high performance and fully integrated window and door system. Due to the specially designed polyamide break and extruded gaskets that are incorporated into the aluminum profile it offers excellent thermal insulation performance with the U<sub>f</sub> rate from 1,0 W/m<sup>2</sup>K and reduced noise properties. All of our MB-70 window and door variations can be glazed into MBSR50 effortlessly resulting in a fully functional facade perfect for any building requirement.

**MB-70**



Opening window - cross-section

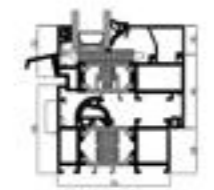


Door - cross-section

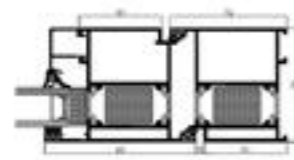


The base variety features special construction of thermal break and innovative 2-chamber gasket design.

**MB-70 HI**



Opening window - cross-section

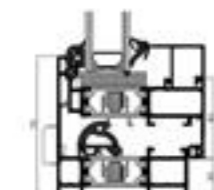


Door - cross-section



Enhanced thermal insulation variety offers excellent thermal performance with the U<sub>t</sub> from 1.0 W/m<sup>2</sup>K due to uniquely designed insulating inserts incorporated inside aluminum profile and in glazing areas.

**MB-70US / MB-70US HI**



Opening window - cross-section

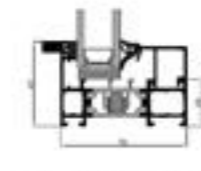


Opening window and fixed window - cross-section

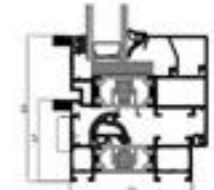


The hidden sash variant of MB-70. It creates a seamless view from outside between fixed and opening sashes as per the drawings on the right. Available in both standard and the HI option for improved thermal performance.

**MB-70 INDUSTRIAL / MB-70 INDUSTRIAL HI**



Fixed window - cross-section



Opening window - cross-section



Whether for renovating old steel windows or giving a stylish steel look to new-build, the MB-70 Industrial enables to keep with the original style, providing all the benefits of modern aluminum technology. Combining attractive design options with long term reliability, the system also features enhanced thermal insulation properties to ensure energy conservation.

**MB-70SG**



Opening window - cross-section

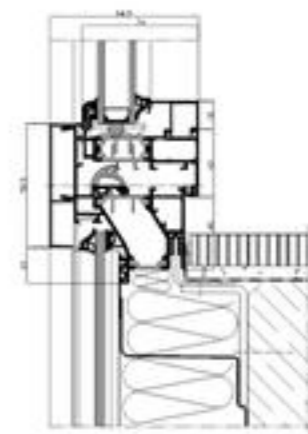


Active window in a curtain wall - cross-section



The MB-70SG system is a structural glazing system where the stepped unit is bonded back to the vent. This results in a frameless vent appearance externally.

**MB-70CW / MB-70CW HI**



Cross-section of an active window



The variety of window that applies where there is curtain walls made up from either reinforced concrete or masonry. It features warm and cold zones with combination of high thermal insulation and in between window strips. Helps reduce fabricating and assembly time. Available in regular and enhanced thermal insulation versions.